

TECHNICAL DATA

Virtual Reality Training for the use of fire extinguishers



Use of Fire Extinguishers is a LUDUS product oriented to training in the use of fire extinguishers to extinguish small fires.

Its objective is to train in the extinguishing of small fires using fire extinguishers. This training tool can be used both by students with previous knowledge and by students without previous knowledge. The student must follow the steps of the safety protocol depending on the context in which the fire develops and select the correct extinguishing agent depending on the type of fire.

01 Simulation content

Extinguishing a fire

In the simulation, the student must extinguish a small fire using a fire extinguisher. To complete the training correctly, the student must follow the steps of the protocol for the use of fire extinguishers and the safety rules.

The average time to complete an exercise is **2 minutes**.

¿What can be configured?:

- Type of fire.
- Type of fire extinguisher.
- Training scenario.
- Training mode: Guided/Unguided

Accidents:

- When the student approaches the fire exceeding the safety distance and comes into contact with the flames, he/she will be shown the consequences that the error would have had in reality.



Fire Classes

- Class A Fire
- Class B Fire
- Class C Fire
- Class D Fire
- Class F Fire
- Electrical Component



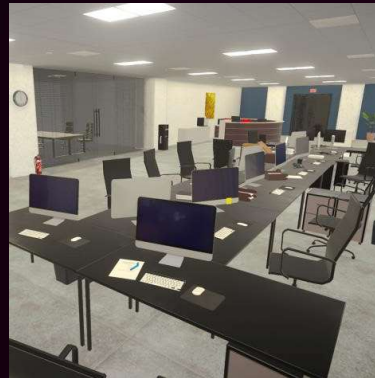
Extinguishing agents

- ABC multipurpose powder extinguisher
- Water extinguisher.
- Water spray extinguisher with AFFF additives.
- AFFF foam extinguisher.
- CO2 carbon dioxide extinguisher.
- Extinguisher for combustible metals.



Training scenarios

- Industrial warehouse
- Housing.
- Office.
- Outdoor space.



Protocol for the use of fire extinguishers

The student must complete the following actions to comply with the safety protocol for the use of fire extinguishers:

- Make sure that the extinguishing agent is suitable for the type of fire.
- Remove the seal and pin.
- Check the pressure gauge and make sure that the extinguisher has pressure and is ready for use.
- Shake the extinguisher/tap it on the ground.
- Take a test shot.
- Position yourself downwind to attack the fire.
- Project the extinguishing agent towards the base of the flames by means of zigzag sweeps.
- Move away from the fire while maintaining visual contact with it.



Statistical system

Basic statistics

Basic statistics displayed to the user at the end of the simulation.

- Exercise duration time
- Completed protocol steps
- List of errors made
- In case of accident, additional information on damage received and avoided

Ludus ENTRENAMIENTO VR PARA EL USO DE EXTINTORES 0:00

EJERCICIO COMPLETADO CON ERRORES

PASOS REALIZADOS	OBSERVACIONES
Revisar presión del extintor	<p>Debes asegurarte que el agente extintor es adecuado para cada tipo de fuego. No utilizar un agente extintor correcto dificultará la tarea de extinción, y en el peor de los casos, puede causar un accidente y empeorar la situación.</p>
Realizar un disparo de prueba	
Posicionarse correctamente respecto al viento	
Atacar la base del fuego con movimientos en Zig Zag	
Extinguir el fuego	
Apartarse manteniendo el contacto visual	

02 Future updates

Physical extinguisher

This training tool will offer the possibility of being used with a real, fully sensorized physical fire extinguisher.

The use of the physical extinguisher in training will increase both realism and immersion during the training.

